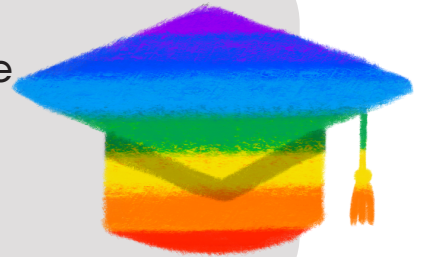


# EQUITY BASED CAREER DEVELOPMENT

## RECOMMENDATIONS ON HOW TO WORK WITH LGBTQ+ STUDENTS WHEN AIDING IN THEIR POSTSECONDARY TRANSITIONS

1

Consider multiple factors and provide support during LGBTQ+ individuals' postsecondary transition



2

Address the lack of resources and support in K-12 settings that impact LGBTQ+ career and college development

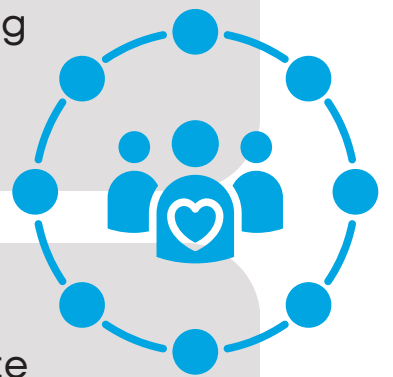


3

Ensure helping professionals receive training to effectively support LGBTQ+ students in their career exploration and development

4

Utilize evidence-based approaches like CIP and PWT to guide the process of working with LGBTQ+ students



5

Foster critical consciousness and community connectedness to facilitate successful transitions for LGBTQ+ students

### Sources

1. May, V., Morgan, M., Yoon, E., (2022) Preparing LGBTQ+ Students for Postsecondary Transitions Through Career Development. In Hines, E. & Owen, L. (Eds.), Equity-Based career development and postsecondary transitions: An American imperative (pp. 301-324). Information Age Publishing.

2. [The School Counselor and LGBTQ+ Youth](#)

3. [Career Considerations of LGBTQ Students](#)

